

Borgo Italiano



B.I.
TUMBLED • Ecrù

Ecrù

TUMBLED



Borgo Italiano Ecrù TUMBLED
60x60 cm • 60x120 cm
24"x24" • 24"x48"

B.I.
TUMBLED • Perla

Perla

TUMBLED



Borgo Italiano Perla TUMBLED
100x100 cm
40"x40"

B.I.
TUMBLED • Grigio

Grigio

TUMBLED



Borgo Italiano Grigio TUMBLED

60x60 cm

24"x24"

B.I.
TUMBLED • Grafite

Grafite

TUMBLED



Borgo Italiano Grafite TUMBLED
100x100x0,85 cm · 100x100x2 cm
40"x40"x1/3" · 40"x40"x3/4"



B.I. TUMBLED 2CM

100x100x2



B.I. Tumbled Ecrù



B.I. Tumbled Perla



B.I. Tumbled Grigio



B.I. Tumbled Grafite

Borgo Italiano Ecrù TUMBLED

100x100x2 cm

40"x40"x3/4"

B.I.
CONTEMPO • Ecrù

Ecrù

CONTEMPO



Borgo Italiano Ecrù CONTEMPO

100x100 cm

40"x40"

B.I.
CONTEMPO • Perla



Borgo Italiano Perla CONTEMPO

60x60 cm

24"x24"

Perla
CONTEMPO

Grigio

CONTEMPO



Borgo Italiano Grigio CONTEMPO
100x100 cm
40"x40"

Grafite

CONTEMPO

B.I.
CONTEMPO • Grafite



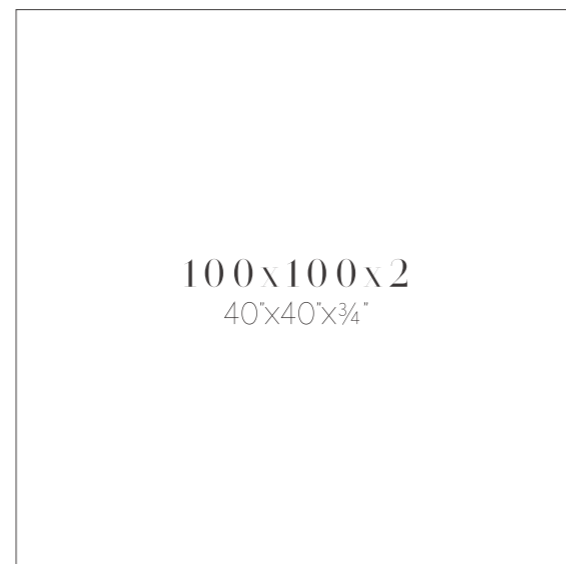
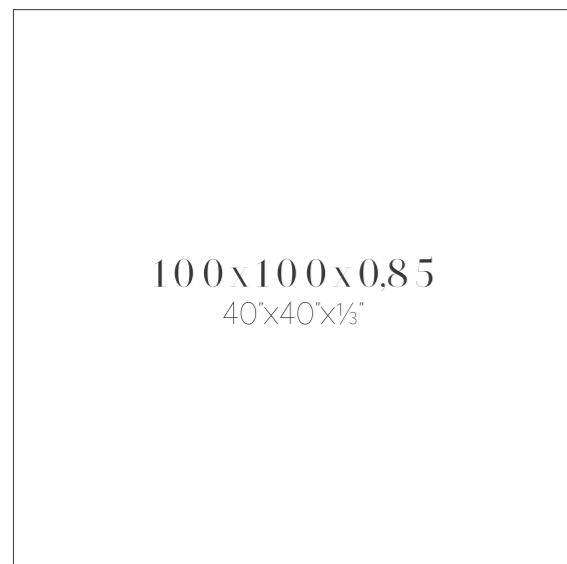
Borgo Italiano Grafite CONTEMPO

60x60 cm

24"x24"

B.I. TUMBLED

rectified tumbled edge



BATTISCOPA
7x100 cm 2 3/4"x40"



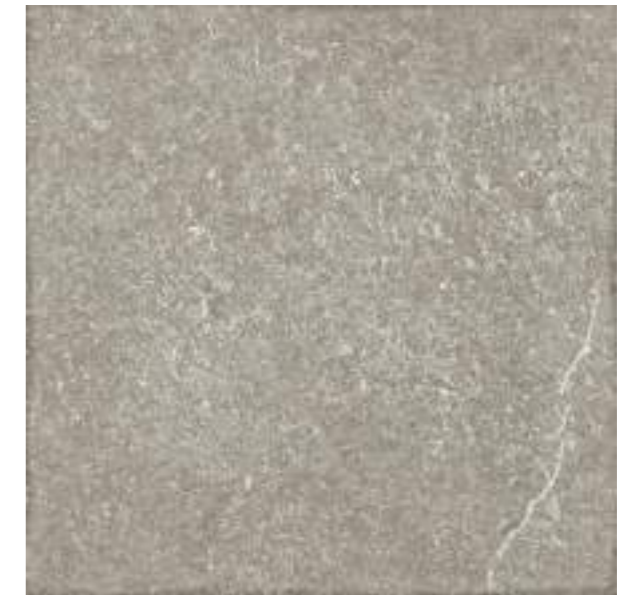
BATTISCOPA
7x120 cm 2 3/4"x48"



BATTISCOPA
7x120 cm 2 3/4"x48"



B.I. Tumbled Ecrù



B.I. Tumbled Perla



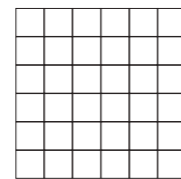
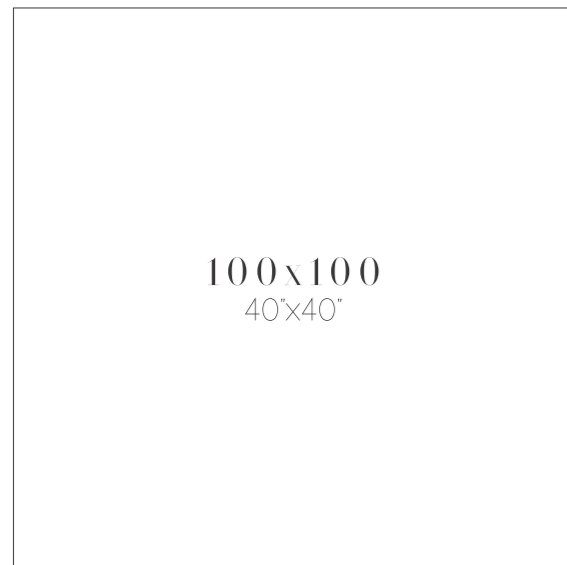
B.I. Tumbled Grigio



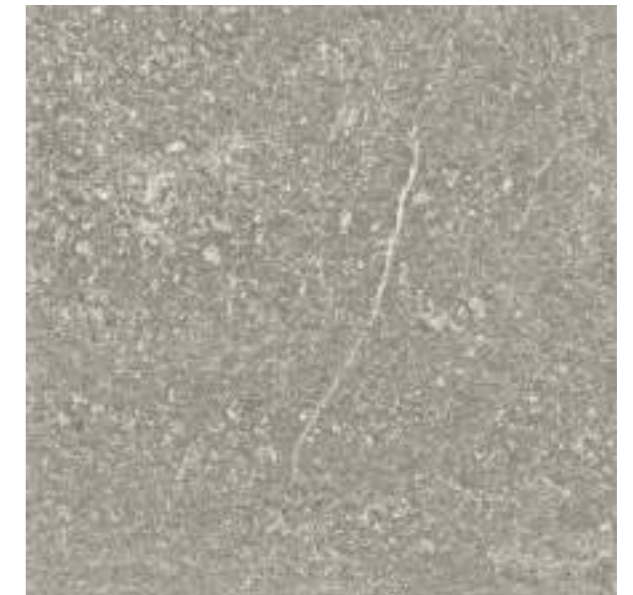
B.I. Tumbled Grafite

B.I. CONTEMPO

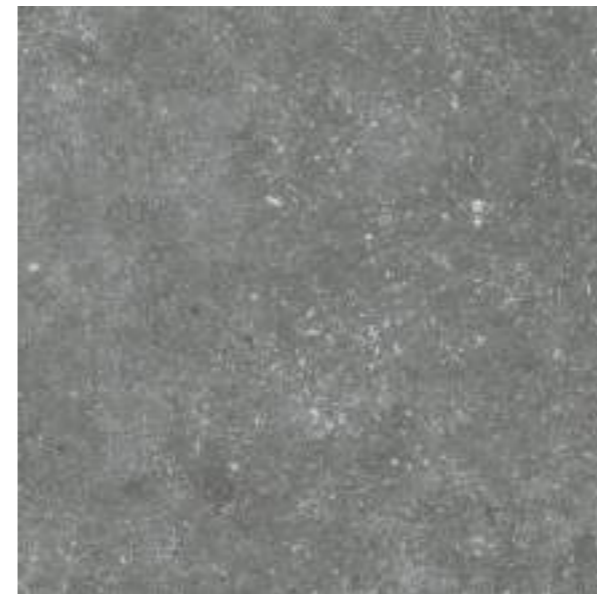
rectified straight edge



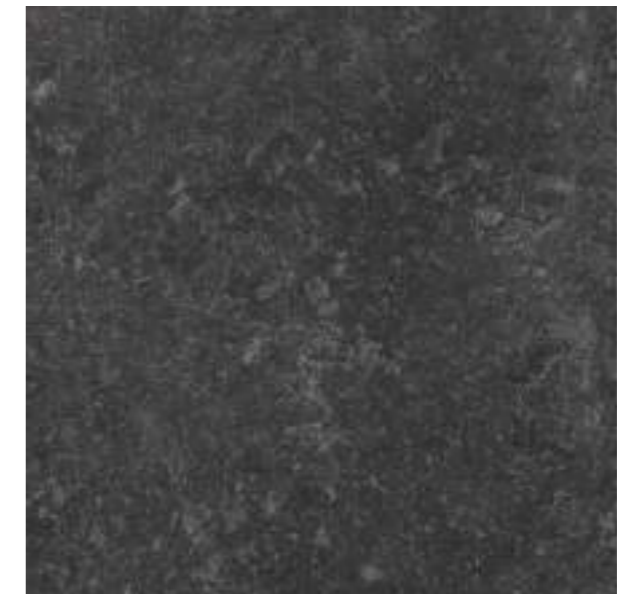
B.I. Contempo Ecrù



B.I. Contempo Perla



B.I. Contempo Grigio



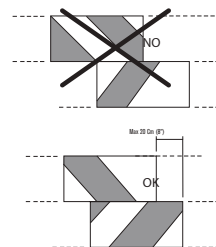
B.I. Contempo Grafite

Caratteristiche Tecniche • Technical features • Technische eigenschaften*

Gres porcellanato impasto colorato - Coloured body porcelain stoneware - Durchgefarbtes Feinsteinzeug -UGL

	NORME TEST N°	DESCRIZIONE DESCRIPTION	VALORE A NORMA REQUIRED STANDARD	VALORE RESULTS
	ISO 10545/3	ASSORBIMENTO D'ACQUA - WATER ABSORPTION ABSORPTION D'EAU - WASSERAUFNAHME	≤ 0,5%	CONFORME CONFORMS
	ISO 10545/4	RESISTENZA ALLA FLESSIONE- BENDING STRENGTH RESISTANCE A LA FLEXION - BIEGESTÄRKE	R ≥ 35 N/mm ²	CONFORME CONFORMS
	ISO 10545/8	COEFFICIENTE DI DILATAZIONE TERMICA LINEARE THERMAL EXPANSION COEFF. BETWEEN 20°C - 100°C COEFF. DE DILATATION THERMIQUE LINEAIRE ENTRE 20°C ET 100°C WÄRMEAUSSDEHNUNG ZWISCHEN 20°C UND 100°C	≤ 9x10 ⁻⁶	9X10-5C-1
	ISO 10545/9	RESISTENZA AGLI SBALZI TERMICI - RESISTANCE TO THERMAL SHOCK RESISTANCE AUX CHOCS THERMIQUES TEMPERATURWECHSELBESTÄNDIGKEIT		RESISTE - RESISTANT RESISTE - BESTÄNDIG
	ISO 10545/11	RESISTENZA AL CAVILLO - CRAZING RESISTANCE RESISTANCE AU TRASSAILAGE - HAARRISSFESTIGKEIT		RESISTE - RESISTANT RESISTE - BESTÄNDIG
	ISO 10545/14	RESISTENZA ALLE MACCHIE - STAIN RESISTANCE RESISTANCE AUX TACHES - FLECKENFESTIGKEIT	min. Classe 3	CONFORME CONFORMS
	ISO 10545/13	RESISTENZA ALL'ATTACCO CHIMICO - CHEMICAL RESISTANCE RESISTANCE À L'ATTAQUE CHIMIQUE - FÄHIG GEGEN SÄUREN UND LAUGEN	min. GB	CONFORME CONFORMS
	ISO 10545/2	LUNGHEZZA E LARGHEZZA - LENGTH AND WIDTH LONGUEUR ET LARGEUR - LÄNGE UND BREITE	± 0,5%	CONFORME CONFORMS
	ISO 10545/2	SPESSORE - THICKNESS ÉPAISSEUR - STÄRKE	± 5%	CONFORME CONFORMS
	ISO 10545/2	ORTOGONALITÀ - WEDGING ORTHOGONALITÉ - RECHTWINKLICHKEIT	± 0,6%	CONFORME CONFORMS
	ISO 10545/2	PLANARITÀ - WARPAGE PLANÉITÉ - EBENFLÄCHIGKEIT	± 0,5%	CONFORME CONFORMS
	ISO 10545/12	RESISTENZA AL GELO - FROST RESISTANCE RESISTANCE AU GEL - FROSTBESTÄNDIGKEIT		RESISTE - RESISTANT RESISTE - BESTÄNDIG
	ISO 10545/6	RESISTENZA ALL'ABRAZIONE PROFONDA - DEEP ABRASION RESISTANCE - RÉSI- TENCE À L'ABRASION PROFONDE - TIEFENVERSCHLEISSBESTÄNDIGKEIT	< 175 mm ³	CONFORME CONFORMS
	ANSI A 1371-2012 BOT 3000 WET DCOF	RESISTENZA ALLO SCIVOLAMENTO SLIP RESISTANCE - RESISTANCE AU GLISSEMENT BESTIMMUNG DER RUTSCHEMME EIGENSCHAFT	≥ 0,42	CONFORME CONFORMS
	DIN 51130 R	water, oil, grease, etc. create slippery conditions. floor applications with exposure to these conditions require extra caution in product selection.		R10
	DIN 51097			A+B

*These test results may change from lot to lot



SOLUZIONI DI POSA
cm 30x60 - 12"x24"
cm 60x120 - 24"x48"

Per una corretta realizzazione si consiglia di posare i formati di lunghezza 60 cm e 120 cm sfalsati a correre di massimo 20 cm o posa pari.

INSTALLATION INFORMATION
cm 30x60 - 12"x24"
cm 60x120 - 24"x48"

For 60 cm (24") and 120 cm (48") long tiles, staggering should not exceed 20 cm (8").

VERLEGEBEISPIELE
cm 30x60 - 12"x24"
cm 60x120 - 24"x48"

Für eine korrekten und einwandfreien Belag, die Formaten mit 60 cm und 120 cm Länge sollten bei der Verlegung maximal 20 cm versetzt sein.

SOLUTIONS DE POSE
cm 30x60 - 12"x24"
cm 60x120 - 24"x48"

Pour une réalisation correcte nous conseillons de poser le format en 60 cm et 120 cm de longueur, au maximum à un tiers/deux tiers.

Noi consigliamo fortemente l'uso di un sistema di posa con distanziatori autolivellanti.

Wir empfehlen dringend die Verwendung von einem Befestigungssystem mit leveling system.

We strongly recommend using a tile edge leveling system during installation.

Il est vivement recommandé l'utilisation d'un système de pose avec des croisillons autonivelant.

SHADE VARIATION



MODERATE
Product with moderate variation

IMBALLI PACKAGING	FORMATO SIZE	UNITÀ DI MISURA UNIT OF MEASUREMENT	PZ/SCATOLA PCS/BOX	MQ/SCATOLA MQ/BOX	KG/SCATOLA KG/BOX	KG/PAL KG/PAL	SCATOLE/PAL BOXES/PAL	MQ/PAL MQ/PAL	SPESSORE THICKNESS
B.I. Tumbled/Contempo	100x100 (40"x40")	M ²	1	1,00	20,96	880,32	42	42,00	8,5 mm
B. I. Tumbled 2 cm	100x100 (40"x40")	M ²	1	1,00	49,06	1030,26	21	21,00	20 mm
B.I. Tumbled	60x120 (24"x48")	M ²	2	1,44	27,21	1061,19	39	56,16	8,5 mm
B.I. Tumbled/Contempo	60x60 (24"x24")	M ²	3	1,08	20,42	980,16	48	51,84	8,5 mm
B.I. Contempo	30x60 (12"x24")	M ²	7	1,26	24,30	972,00	40	50,40	8,5 mm
B.I. Mosaico 5x5 (2"x2")	30x30 (12"x12")	FOGLIO/SHEET	8	-	16,14	677,88	42	-	8,5 mm
B.I. Battiscopa	7x120 (2¾"x48")	PZ	6	-	13,00	520	40	-	8,5 mm
B.I. Battiscopa	7x100 (2¾"x40")	PZ	6	-	8,64	362,88	42	-	8,5 mm
B.I. Battiscopa	7x60 (2¾"x24")	PZ	15	-	14	560,00	40	-	8,5 mm



Verde 1999 srl - Via Ghiarola Nuova, 158
41042 Fiorano Modenese, MO Italy
tel +39 0536 832393 - fax +39 0536 913591
www.verde1999.com - info@verde1999.com

100%
MADE IN ITALY

Ceramics of Italy